

MOTOROLA LEX L10 MISSION CRITICAL LTE HANDHELD





PURPOSE-BUILT LTE FEATURING THE NEW PUBLIC SAFETY EXPERIENCE

LEX L10 MISSION CRITICAL LTE HANDHELD

The Motorola LEX L10 Mission Critical LTE Handheld is purpose-built to deliver the Public Safety Experience that responders need to work safer, smarter and faster. It addresses the unique requirements of public safety personnel by delivering the mission critical capabilities not available on consumer-grade smartphones.

DYNAMIC INTELLIGENCE

The device is equipped with the Public Safety Experience (PSX) user interface (UI) that is customizable, role-based and adaptive. It intelligently aggregates and prioritizes information to only present what is critical for the user, based on their current status and activity. On patrol, it prioritizes the surrounding environment, improving awareness. When an officer is dispatched, it highlights incident information and the best route to the scene so they can arrive faster and better prepared. On scene, it guides the user with the agency's custom workflow, enhancing safety and efficiency.

MISSION CRITICAL PERFORMANCE

The sleek LEX L10 is ergonomically designed for one-handed operation with a no-slip grip texture on the removable battery cover and a 4.7-inch touch screen. It includes best-in-class audio performance with dual 1 Watt front-facing speakers, tri-microphone noise and echo cancellation, and a dedicated, tactile push-to-talk (PTT) button for fast voice collaboration.

The LEX L10 is secured with FIPS 140-2 Level 3 hardware encryption, Security Enhanced (SE) Android OS and Secure Boot to deter cyber threats. It works on commercial carrier 3G/4G LTE (Bands 13 & 4) as well as Public Safety LTE (Band 14) ensuring optimal coverage and performance at all times.

The LEX L10 can operate in covert mode and can be securely touch-paired with Motorola APX Project 25 (P25) radios via Mission Critical Bluetooth® in order to remotely control the radio's zones, channels, volume, emergency and more.

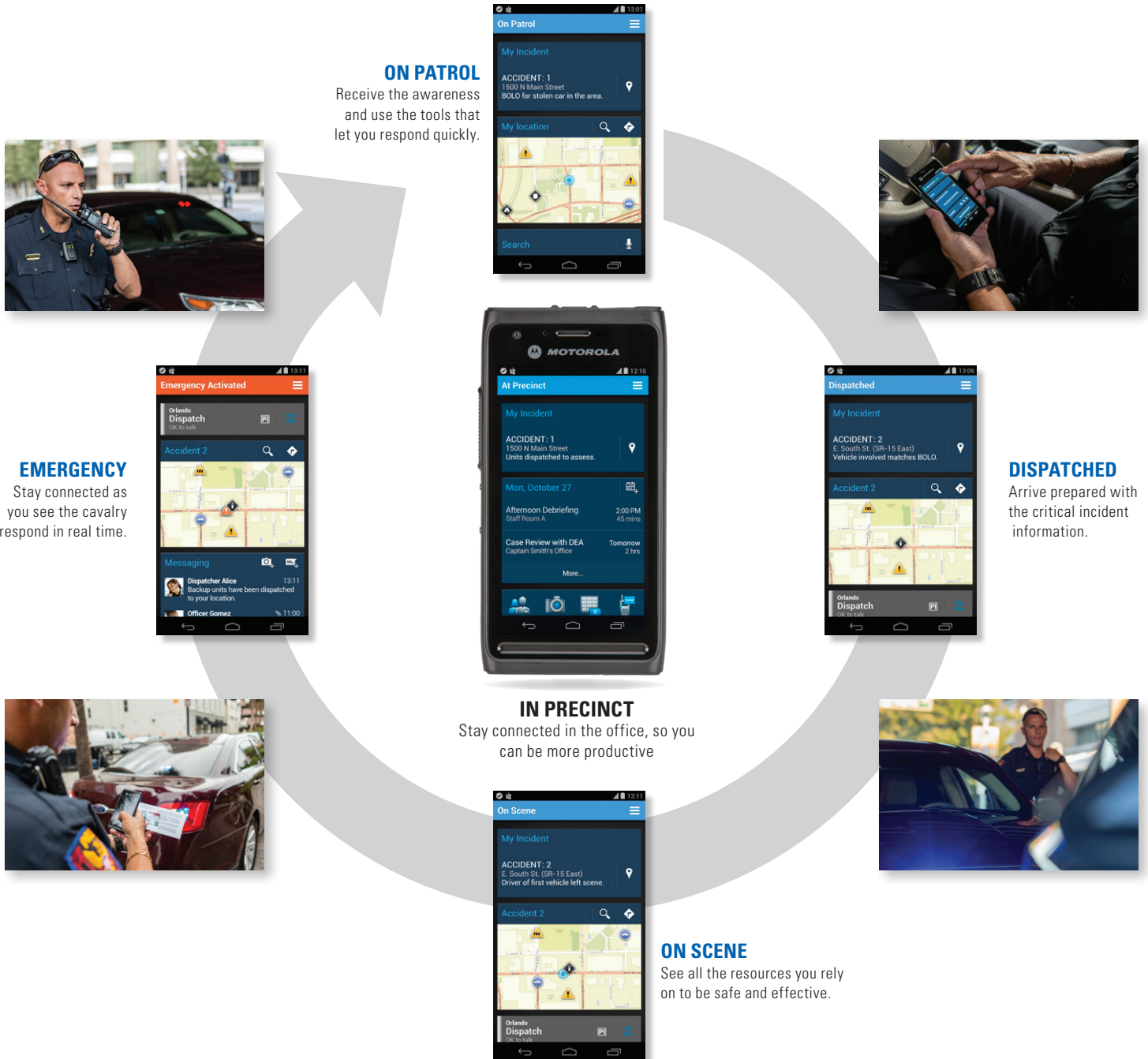
WHAT TYPES OF DATA DEVICES DO YOU, OR YOUR FIRST RESPONDERS, USE ON THE JOB?

78%
USE SMARTPHONE



ADVANCING THE INTELLIGENT EDGE WITH THE NEXT GENERATION USER INTERFACE

The PSX user interface adapts to changing tasks and environments, allowing the user to multi-task while providing situational awareness. It creates a unified user experience between devices and across agencies, creating more opportunities to collaborate and share information. It's an intuitive interface that puts safety above everything else by adapting and focusing only on what's needed. It presents information clearly and concisely, improving efficiency and eliminating error.

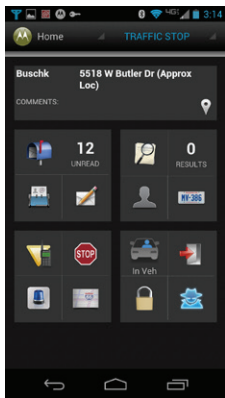


70%
SAY GETTING DATA MESSAGES THROUGH IS EQUAL TO VOICE COMMUNICATIONS

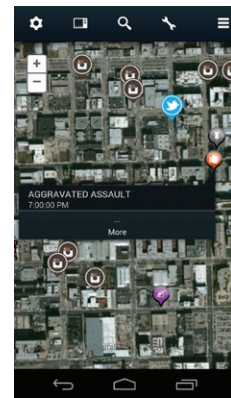
UNIFIED DATA: PUBLIC SAFETY APPLICATIONS DELIVER MISSION CRITICAL INTELLIGENCE

The LEX L10 supports a suite of public safety applications designed to leverage mission critical intelligence in the field. Motorola's public safety applications are purpose-built to improve situational awareness, deter crime and better connect with citizens. These applications also improve the agency's efficiency by automating manual processes, maximizing report accuracy and minimizing the time to process misdemeanors. As a result, officers can spend more time on patrol and less time doing paperwork. The responders see one view based on common location, tracking, presence, video feeds and other data sources to enable better collaborative actions. Network managers have visibility and control across the unified communications network, applications and fleet of devices.

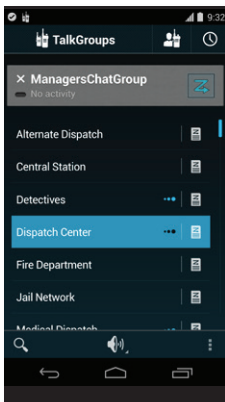
- Real-Time Video Streaming
- Electronic Citation
- Asset Tracking and Management
- Incident Command
- Computer Aided Dispatch (CAD)
- Query and Messaging
- Identity Verification
- Evidence Collection
- Broadband PTT
- Email and Web
- False Alarm Management
- Report Writing
- Data Capture
-
- Mapping and Navigation



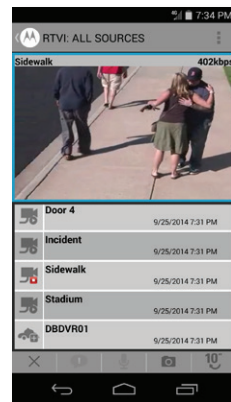
Premier One CAD for handheld access to dispatch notifications, incident data, and query messaging



Intelligent Data Portal for layer-based mapping of people, resources, events, alerts and developing situations



WAVE Work Group Communications for seamless voice interoperability across Land Mobile Radio (LMR) systems and broadband networks



Real-Time Video Intelligence for two-way streaming of live video and camera remote control

ENABLE DRAMATIC INCREASES IN PRODUCTIVITY, DATA ACCURACY AND REVENUES IN TODAY'S BUSINESS PROCESS




AVERAGE TIME TO PROCESS TICKET
PAPER CITATION **12 DAYS**
E-CITATION **MINUTES**

DATA ERROR RATE
MANUAL CAPTURE **30%**
AUTOMATED CAPTURE **1%**

TIME TO PROCESS MISDEMEANOR
AT STATION **8 HOURS**
ON SCENE **30 MINUTES**

THE ART OF MISSION CRITICAL DESIGN

The LEX L10 Mission Critical LTE Handheld delivers an exceptional combination of rugged hardware, powerful software and broadband connectivity.

Front 2MP Camera		Recessed Power/Mode Button		3.5 mm Headphone Jack
Ambient Light / Proximity Sensors		Rubberized Top Surface		Rear 8MP Camera
Textured PTT Button		Mission Critical Bluetooth	High-Output LED Flash	
Up/Down Volume Buttons		Rear Microphone	Removable Battery Cover	
4.7" Capacitive Touch Screen		No-slip Grip Texture	Ruggedized Construction	
Front Bottom Microphone		Charger Docking Port		
Dual 1W Front-Facing Speakers	Rubberized Bottom Surface			
				
		Micro USB Port		

LEX L10 ACCESSORIES

QUICK-ACCESS LEATHER HOLSTER

Designed to meet public safety specifications, the leather holster securely holds the LEX L10 Mission Critical Handheld while also providing quick "eyes-off" volume and dedicated push-to-talk buttons.



DESKTOP CRADLE

Continue to use the LEX L10 screen while conveniently charging it in the rugged desktop cradle which is able to withstand spills, drops and vibration making it suitable for both the desktop and a command vehicle. A USB 2.0 interface enables quick data synchronization with a desktop PC.



IMPACT-RATED VEHICLE CRADLE

Built to withstand impacts up to 75G, the vehicle cradle securely holds the LEX L10 while providing access to the display and all buttons. In addition, the cradle includes a rapid-charge vehicle adapter, providing up to 3A of current to quickly replenish the battery.



PRODUCT DATA SHEET

LEX L10 MISSION CRITICAL LTE HANDHELD

LTE

Release	3GPP Release 9
Band Class	Band 4, 13 Band 14 (Public Safety LTE)
Output Power	23 dBm +/- 2 dB (UE power class 3)
Bandwidth	5 MHz, 10 MHz Broadband data throughput depends on network conditions

CDMA

Standards	EVDO Rev. A (Band 0, Band 1) 3G, 1X
Frequencies	800/1900 MHz

WI-FI

Operating Band	2.4 GHz, 5 GHz
Standards	802.11 a/b/g/n

PERSONAL AREA NETWORKS

Bluetooth	Bluetooth 4.0 Low Energy (LE) + Enhanced Data Rate (EDR) Mission Critical Wireless Bluetooth Max throughput 2.1 Mbps A2DP Stereo Profile
-----------	---

GPS

Location Services	Standalone GPS Assisted GPS (aGPS)
-------------------	---------------------------------------

DEVICE MANAGEMENT

Remote management and configuration	Supports OMA-DM (Open Mobile Alliance Device Management)
-------------------------------------	--

VIDEO AND IMAGING

Supported Formats	H.263, H.264, MPEG-4 SP, VP8, JPEG (.jpg), GIF (.gif), PNG (.png), BMP (.bmp), WebP (.webp) Formats supported for playback, streaming and recording
Supported File Types	3GPP (.3gp), MPEG-4 (.mp4), WebM (.webm), (.mkv)
Video Recording Quality	1080p HD up to 30 frames per second (fps)

Note: Video and images are time stamped for evidence documentation

AUDIO

Supported Formats	MP3, WAVE, AAC, AMR-NB, AMR-WB, FLAC, MIDI, Vorbis
Supported File Types	MP3 (.mp3), WAVE (.wav), 3GPP (.3gp), MPEG-4 (.mp4, m4a), ATDS raw AAC (.aac), MPEG-TS (.ts), FLAC (.flac), MIDI (.mid, .xmf, .mxmf), RTTTL/RTX (.rtttl, .rtx), OTA (.ota), iMelody (.imy), Ogg (.ogg), Matroska (.mkv)
Output	Dual 1 Watt Front-Facing Speakers, 106 dB Sound Pressure Level (SPL) 3.5 mm audio jack (stereo) Bluetooth (A2DP stereo)
Input	Triple Noise and Echo Cancelling Microphones

QUICK ACCESS LEATHER HOLSTER

Dimensions (H x W x D)	5.7 x 3.5 x 2.0 in (145 x 90 x 50 mm)
------------------------	--

HARDWARE

Processor	2.3 GHz Qualcomm MSM8974AB Quad Core Processor
Display	4.7" 720X1280 Capacitive, touch screen
Memory	2 GB RAM 16 GB eMMC Expandable to 64GB with microSD™ card
Camera	Rear 8MP Camera Auto Focus High-Output LED Flash Digital Zoom Front 2MP Camera
Sensors	Proximity Sensor Ambient Light Sensor Accelerometer Sensor Barometer Sensor E-Compass
Ports	USB 2.0 High-Speed 3.5 mm Audio Jack (stereo) Accessory/Charging Port
Battery	Standard - 2280 mAh, 10 hours High Capacity - 4560 mAh, 20 hours

PHYSICAL

Dimensions (H x W x D)	5.62 x 2.85 x .547 in 143 x 72.6 x 13.9 mm
Weight	195 g including standard battery
Durability	Continues to run after multiple drops to concrete from a height of 48 inches (121 cm) Drop tested using MIL-STD-810G Method 516.6, Procedure IV IP67 (1 meter water immersion for 30 minutes)
Operating Temperature	14°F to 131°F (-10°C to +55°C)
Storage Temperature	-22°F to 149°F (-30°C to +65°C)

SOFTWARE

Operating System	Android™ KitKat 4.4.4
User Interface	Public Safety Experience (PSX) Software
Messaging	SMS/MMS Email (Corporate Sync, POP3, IMAP, Push Email)
Web	Standard AOSP Browser



PRODUCT DATA SHEET
LEX L10 MISSION CRITICAL LTE HANDHELD

GENERAL ACCESSORIES

	Desktop Cradle	Impact-rated Vehicle Cradle
--	----------------	-----------------------------

PHYSICAL

Dimensions (H x W x D)	6.0 x 5.0 x 3.5 in	Z
(152 x 128 x 89 mm)	6.1 x 3.0 x 2.2 in	
(155 x 76 x 56 mm)		
Weight	12.8 oz (363 g)	4.8 oz (135 g)

ENVIRONMENTAL SPECIFICATION

Operating Temperature	32°F to 113°F (0°C to +45°C)	-4°F to 131°F (-20°C to +55°C)
Storage Temperature	-40° F to 158°F (-40°C to 70°C)	-40° F to 185°F (-40°C to +85°C)
Humidity	95% at 113°F (45°C) for 8 hours (non-condensing)	95% at 131°F (55°C) for 8 hours (non-condensing)

DURABILITY

Salt Fog	Yes	Yes
Vibration	Yes	Yes
Drop	Yes	Yes
Shock (Functional)	Yes	Yes
Shock (Crash Hazard)		Yes, MIL-STD-810G, 75G impact
ESD	Yes	Yes
Solar Radiation		Yes
Liquid Resistance	Yes	Yes

SAFETY REGULATORY

Electrical Safety	US: UL60950	US: UL60950
EMI/RFI	FCC part 15, Subpart B, Class B	
ANSI C63.4 2009	FCC part 15, Subpart B, Class B	
ANSI C63.4 2009		
Flammability	ANSI/UL-94 and ASTM Standards	ANSI/UL-94 and ASTM Standards

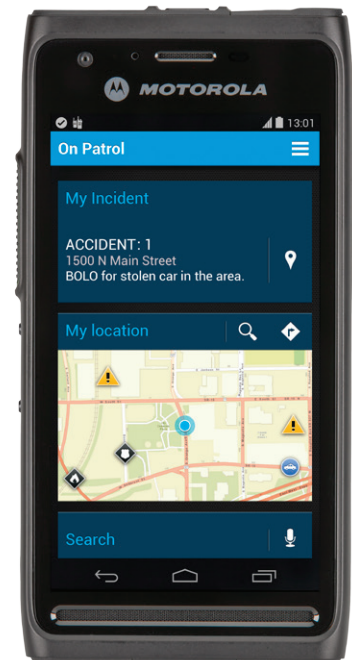
ELECTRICAL

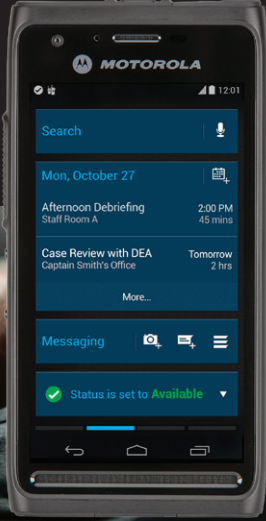
Power Supply	External power supply input 100-240VAC output 5.0VDC 1.2A	12V-24V, 5.0VDC, 1.2A
Power Input	5.0 VDC, 1.2A	5.0 VDC, 1.2A
DC Output	5.0VDC	5.0VDC
Power On	With device insertion	With device insertion

OPTIONAL ACCESSORIES

Vehicle Ram® Mount Kit		
------------------------	--	--

Specifications subject to change.





MOTOROLA LEX L10 MISSION CRITICAL LTE HANDHELD

For more information, please visit: www.motorolasolutions.com/LEXL10

Motorola Solutions, Inc. 1301 E. Algonquin Road, Schaumburg, Illinois 60196 U.S.A.

MOTOROLA, MOTO, MOTOROLA SOLUTIONS and the Stylized M Logo are trademarks or registered trademarks of Motorola Trademark Holdings, LLC and are used under license. All other trademarks are the property of their respective owners. ©2014 Motorola, Inc. All rights reserved. R3-36-1000

